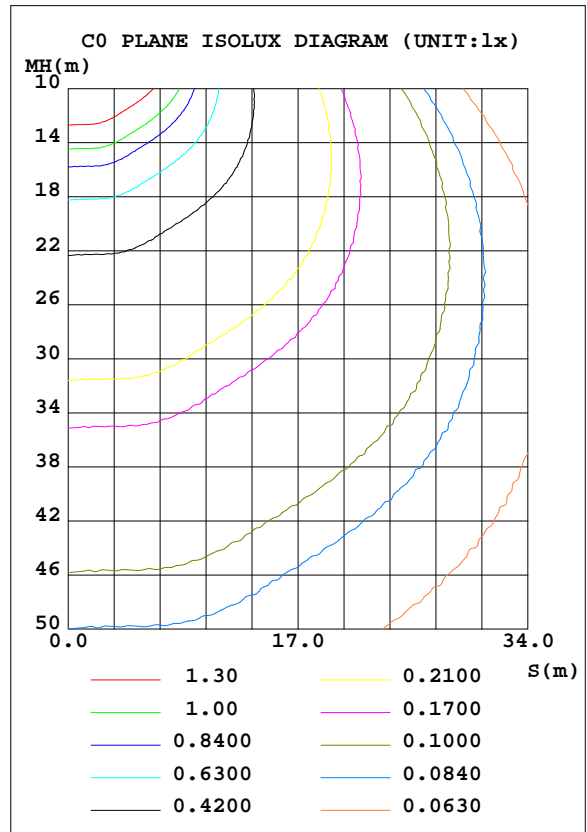
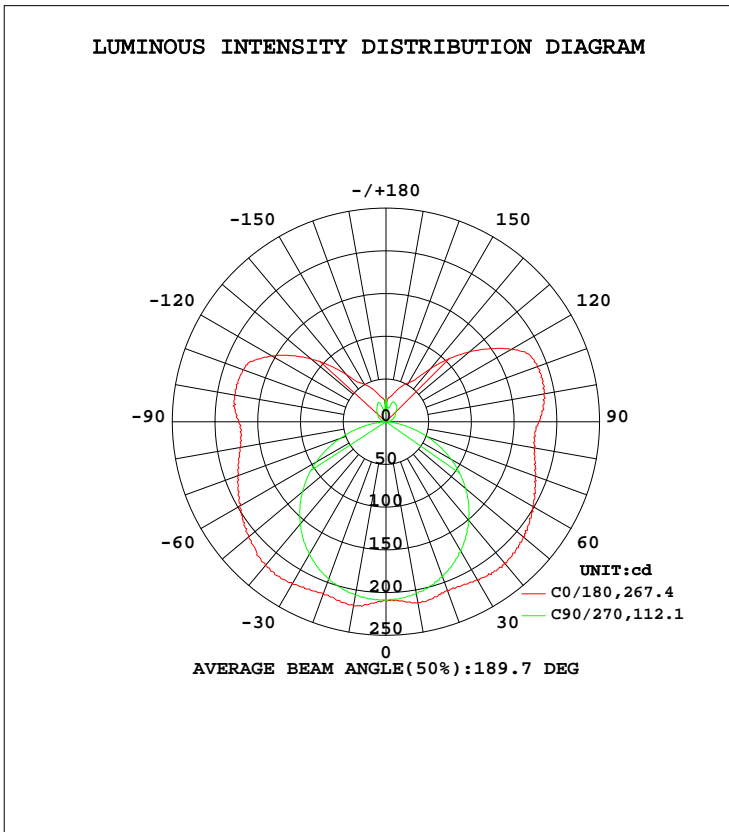


LUMINAIRE PHOTOMETRIC TEST REPORT

Test:U:120.18V I:0.2381A P:28.380W PF:0.9918 Freq:60.00Hz Lamp Flux:1458.9x1 lm		
NAME:	TYPE:	WEIGHT:
SPEC.:	DIM.:	SERIAL No.:
MFR.:	SUR.:	Shielding Angle:

DATA OF LAMP		PHOTOMETRIC DATA				Eff: 51.41 lm/W
MODEL	VN27-36-30S-952C5 -MSTD-SB00-3000K	Imax(cd)	221.3	S/MH(C0/180)	1.60	
NOMINAL POWER(W)	28	LOR(%)	100.0	S/MH(C90/270)	1.27	
RATED VOLTAGE(V)	120	TOTAL FLUX(lm)	1458.9	η UP, DN(C0-180)	17.3, 32.5	
NOMINAL FLUX(lm)	1458.9	CIE CLASS	SEMI-D.	η UP, DN(C180-360)	17.1, 33.2	
LAMPS INSIDE	1	η up(%)	34.4	CIBSE SHR NOM	1.50	
TEST VOLTAGE(V)	120	η down(%)	65.6	CIBSE SHR MAX	1.55	



C Range: 0 - 360DEG
 C Interval: 22.5DEG
 Test Speed: HIGH
 Temperature:25.1DEG
 Operators:Wilson
 Test Date:2022-12-09

γ Range: 0 - 180DEG
 γ Interval: 0.5DEG
 Test System:EVERFINE GO-R5000_V2 SYSTEM V2.00.444
 Humidity:60.5%
 Test Distance:2.617m [K=1.0000]
 Remarks: File No.: WT-F-504-3206-01-A

Checker: Near Gao

Assessor: Akin Xu

ZONAL FLUX DIAGRAM

ZONAL FLUX DIAGRAM:

γ	C0	C45	C90	C135	C180	C225	C270	C315	γ	Φ zone	Φ total	%lum, lamp
10	214.9	209.7	204.6	213.5	218.8	215.1	206.4	210.9	0- 10	20.09	20.09	1.38,1.38
20	210.1	205.0	192.9	207.4	214.6	210.0	196.6	207.8	10- 20	59.22	79.31	5.44,5.44
30	213.0	191.4	174.7	197.4	219.2	198.4	179.7	196.4	20- 30	93.08	172.4	11.8,11.8
40	215.3	181.8	150.9	190.1	219.9	190.3	156.4	190.5	30- 40	120.9	293.3	20.1,20.1
50	209.3	169.9	121.7	179.3	210.3	177.2	128.0	181.4	40- 50	139.0	432.2	29.6,29.6
60	197.7	151.4	88.41	161.5	198.1	157.8	94.56	165.0	50- 60	145.1	577.3	39.6,39.6
70	185.3	129.3	51.72	141.9	185.4	134.6	57.78	145.7	60- 70	139.7	717.0	49.1,49.1
80	175.0	110.8	16.80	125.8	173.9	114.1	21.06	128.3	70- 80	126.0	843.0	57.8,57.8
90	178.0	110.3	1.520	123.8	173.1	106.9	1.231	126.5	80- 90	114.4	957.4	65.6,65.6
100	187.4	118.9	3.852	129.1	180.5	114.1	2.819	134.6	90-100	118.5	1076	73.8,73.8
110	188.4	117.1	7.768	124.8	178.5	106.9	6.327	135.8	100-110	117.0	1193	81.8,81.8
120	168.9	90.85	11.61	97.55	155.0	82.91	9.803	108.1	110-120	99.08	1292	88.6,88.6
130	127.2	61.45	14.56	66.11	114.7	54.43	12.48	74.09	120-130	70.47	1363	93.4,93.4
140	81.29	45.16	19.48	48.73	72.48	42.00	16.90	50.46	130-140	43.75	1406	96.4,96.4
150	53.36	38.47	23.50	40.74	50.49	35.99	20.78	41.88	140-150	26.30	1433	98.2,98.2
160	40.24	31.71	24.69	32.68	38.62	29.52	24.16	32.99	150-160	16.31	1449	99.3,99.3
170	29.85	18.13	16.56	23.58	28.97	25.96	14.77	28.34	160-170	7.992	1457	99.9,99.9
180	9.942	9.942	9.942	9.942	9.941	9.941	9.941	9.941	170-180	2.001	1459	100,100
DEG	LUMINOUS INTENSITY:cd									UNIT:lm		

Conical surface Flux(90deg): 361.23 lm

%lum = 24.8%
 %lamp = 24.8%

Conical surface Flux(120deg): 577.34 lm

%lum = 39.6%
 %lamp = 39.6%

C Range: 0 - 360DEG
 C Interval: 22.5DEG
 Test Speed: HIGH
 Temperature:25.1DEG
 Operators:Wilson
 Test Date:2022-12-09

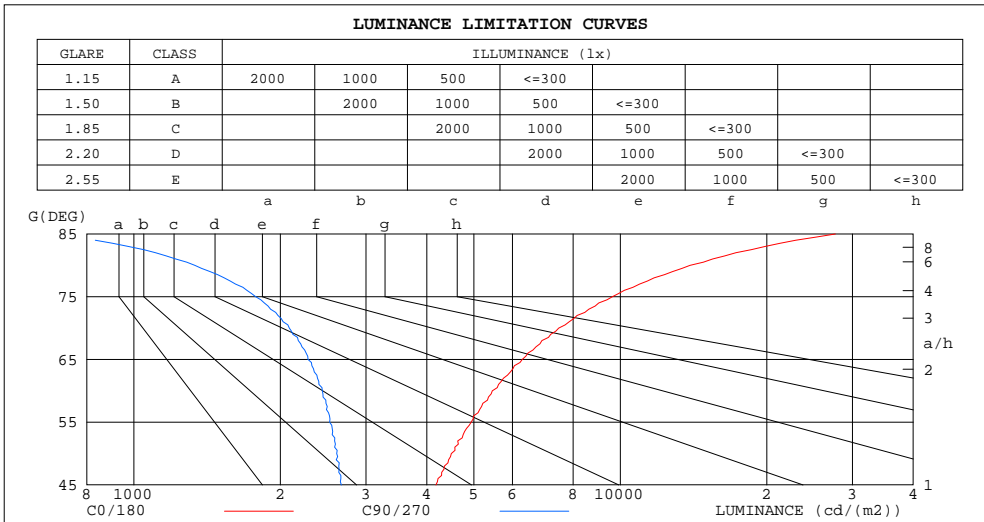
γ Range: 0 - 180DEG
 γ Interval: 0.5DEG
 Test System:EVERFINE GO-R5000_V2 SYSTEM V2.00.444
 Humidity:60.5%
 Test Distance:2.617m [K=1.0000]
 Remarks: File No.: WT-F-504-3206-01-A

Checker: Near Gao

Assessor: Akin Xu

LUMINANCE LIMITATION CURVES

Test:U:120.18V I:0.2381A P:28.380W PF:0.9918 Freq:60.00Hz Lamp Flux:1458.9x1 lm		
NAME:	TYPE:	WEIGHT:
SPEC.:	DIM.:	SERIAL No.:
MFR.:	SUR.:	Shielding Angle:



LUMINANCE cd/(m2)		
G(DEG)	C0/180	C90/270
85	27663	679
80	13907	1335
75	9633	1780
70	7473	2086
65	6284	2281
60	5456	2440
55	4937	2525
50	4492	2612
45	4179	2671

C Range: 0 - 360DEG
 C Interval: 22.5DEG
 Test Speed: HIGH
 Temperature: 25.1DEG
 Operators: Wilson
 Test Date: 2022-12-09

γ Range: 0 - 180DEG
 γ Interval: 0.5DEG
 Test System: EVERFINE GO-R5000_V2 SYSTEM V2.00.444
 Humidity: 60.5%
 Test Distance: 2.617m [K=1.0000]
 Remarks: File No.: WT-F-504-3206-01-A

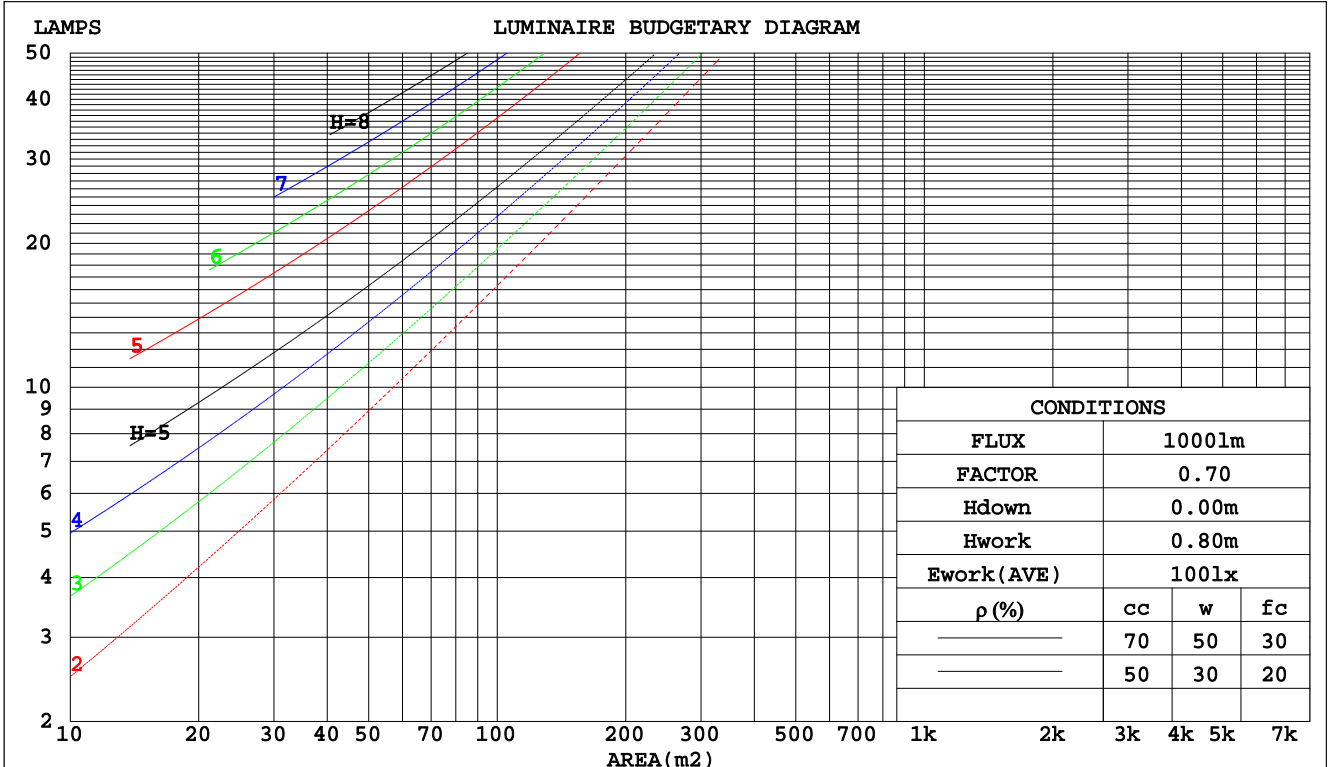
Checker: Near Gao

Assessor: Akin Xu

CU AND LUMINAIRE BUDGETARY ESTIMATE DIAGRAM

Test:U:120.18V I:0.2381A P:28.380W PF:0.9918 Freq:60.00Hz		
Lamp Flux:1458.9x1 lm		
NAME:	TYPE:	WEIGHT:
SPEC.:	DIM.:	SERIAL No.:
MFR.:	SUR.:	Shielding Angle:

pcc	80%			70%			50%			30%			10%			0
	50%	30%	10%	50%	30%	10%	50%	30%	10%	50%	30%	10%	50%	30%	10%	0
pw																0
pfc	20%			20%			20%			20%			20%			0
RCR	RCR:Room Cavity Ratio						Coefficients of Utilization(CU)									
0.0	1.11	1.11	1.11	1.04	1.04	1.04	.92	.92	.92	.81	.81	.81	.70	.70	.70	.66
1.0	.92	.86	.81	.86	.81	.77	.75	.72	.68	.66	.63	.60	.57	.54	.52	.48
2.0	.78	.70	.64	.73	.66	.60	.64	.59	.54	.56	.51	.47	.48	.44	.41	.37
3.0	.68	.59	.52	.63	.55	.49	.55	.49	.44	.48	.43	.39	.41	.37	.34	.30
4.0	.59	.50	.43	.56	.47	.41	.49	.42	.36	.42	.37	.32	.36	.32	.28	.25
5.0	.52	.43	.36	.49	.41	.34	.43	.36	.31	.38	.32	.27	.32	.28	.24	.21
6.0	.47	.38	.31	.44	.36	.29	.39	.32	.26	.34	.28	.24	.29	.24	.21	.18
7.0	.42	.33	.27	.40	.31	.26	.35	.28	.23	.31	.25	.21	.26	.22	.18	.16
8.0	.38	.29	.24	.36	.28	.22	.32	.25	.20	.28	.22	.18	.24	.20	.16	.14
9.0	.35	.26	.21	.33	.25	.20	.29	.23	.18	.26	.20	.16	.22	.18	.14	.12
10.0	.32	.24	.19	.30	.23	.18	.27	.20	.16	.24	.18	.15	.21	.16	.13	.11



C Range: 0 - 360DEG
 C Interval: 22.5DEG
 Test Speed: HIGH
 Temperature: 25.1DEG
 Operators: Wilson
 Test Date: 2022-12-09

γ Range: 0 - 180DEG
 γ Interval: 0.5DEG
 Test System: EVERFINE GO-R5000_V2 SYSTEM V2.00.444
 Humidity: 60.5%
 Test Distance: 2.617m [K=1.0000]
 Remarks: File No.: WT-F-504-3206-01-A

Checker: Near Gao

Assessor: Akin Xu

WEC AND CCEC

Test:U:120.18V I:0.2381A P:28.380W PF:0.9918 Freq:60.00Hz		
Lamp Flux:1458.9x1 lm		
NAME:	TYPE:	WEIGHT:
SPEC.:	DIM.:	SERIAL No.:
MFR.:	SUR.:	Shielding Angle:

ρcc	80%			70%			50%			30%			10%			0
ρw	50%	30%	10%	50%	30%	10%	50%	30%	10%	50%	30%	10%	50%	30%	10%	0
ρfc	20%			20%			20%			20%			20%			0
RCR	RCR:Room Cavity Ratio						Wall Exitance Coefficients(WEC)									
0.0																
1.0	.386	.220	.070	.369	.210	.067	.336	.193	.061	.305	.176	.056	.277	.161	.052	
2.0	.330	.181	.056	.314	.173	.053	.284	.158	.049	.257	.144	.045	.231	.131	.041	
3.0	.292	.155	.047	.278	.149	.045	.250	.136	.041	.225	.123	.038	.201	.111	.034	
4.0	.262	.136	.040	.249	.130	.039	.224	.119	.035	.201	.108	.032	.179	.097	.030	
5.0	.238	.121	.035	.226	.116	.034	.203	.106	.031	.182	.096	.028	.162	.086	.026	
6.0	.218	.109	.031	.207	.104	.030	.186	.095	.028	.166	.086	.025	.147	.078	.023	
7.0	.201	.099	.028	.191	.095	.027	.171	.086	.025	.153	.078	.023	.136	.071	.021	
8.0	.186	.091	.026	.177	.087	.025	.159	.079	.023	.142	.072	.021	.126	.065	.019	
9.0	.173	.084	.023	.165	.080	.023	.148	.073	.021	.132	.066	.019	.117	.060	.017	
10.0	.162	.078	.022	.154	.074	.021	.138	.068	.019	.124	.061	.017	.110	.055	.016	

ρcc	80%			70%			50%			30%			10%			0
ρw	50%	30%	10%	50%	30%	10%	50%	30%	10%	50%	30%	10%	50%	30%	10%	0
ρfc	20%			20%			20%			20%			20%			0
RCR	RCR:Room Cavity Ratio						Ceiling Cavity Exitance Coefficients(CCEC)									
0.0	.452	.452	.452	.387	.387	.387	.264	.264	.264	.152	.152	.152	.048	.048	.048	
1.0	.450	.420	.392	.385	.360	.338	.263	.248	.234	.151	.143	.136	.049	.046	.044	
2.0	.443	.398	.359	.380	.342	.310	.260	.237	.217	.150	.138	.127	.048	.045	.041	
3.0	.436	.382	.338	.374	.329	.293	.257	.229	.206	.148	.134	.121	.048	.043	.040	
4.0	.429	.370	.325	.368	.319	.282	.253	.223	.199	.146	.130	.118	.047	.042	.039	
5.0	.421	.360	.315	.362	.312	.274	.249	.218	.194	.144	.128	.115	.046	.042	.038	
6.0	.414	.353	.309	.356	.305	.269	.245	.214	.190	.142	.126	.113	.046	.041	.037	
7.0	.407	.346	.304	.350	.300	.265	.242	.210	.188	.141	.124	.112	.045	.041	.037	
8.0	.401	.341	.300	.345	.296	.262	.239	.208	.186	.139	.122	.111	.045	.040	.037	
9.0	.394	.336	.297	.340	.292	.259	.235	.205	.184	.137	.121	.110	.044	.040	.036	
10.0	.389	.332	.295	.335	.289	.257	.232	.203	.183	.136	.120	.109	.044	.039	.036	

C Range: 0 - 360DEG
 C Interval: 22.5DEG
 Test Speed: HIGH
 Temperature:25.1DEG
 Operators:Wilson
 Test Date:2022-12-09

γ Range: 0 - 180DEG
 γ Interval: 0.5DEG
 Test System:EVERFINE GO-R5000_V2 SYSTEM V2.00.444
 Humidity:60.5%
 Test Distance:2.617m [K=1.0000]
 Remarks: File No.: WT-F-504-3206-01-A

Checker: Near Gao

Assessor: Akin Xu

UGR(Unified Glare Rating) Table

Test:U:120.18V I:0.2381A P:28.380W PF:0.9918 Freq:60.00Hz										
Lamp Flux:1458.9x1 lm										
NAME:			TYPE:				WEIGHT:			
SPEC.:			DIM.:				SERIAL No.:			
MFR.:			SUR.:				Shielding Angle:			
ceiling/cavity	0.7	0.7	0.5	0.5	0.3	0.7	0.7	0.5	0.5	0.3
walls	0.5	0.3	0.5	0.3	0.3	0.5	0.3	0.5	0.3	0.3
working plane	0.2	0.2	0.2	0.2	0.2	0.2	0.2	0.2	0.2	0.2
Room dimensions	Viewed crosswise					Viewed endwise				
x = 2H y = 2H	16.7	17.9	17.4	18.7	19.5	13.4	14.6	14.1	15.3	16.2
3H	19.7	20.8	20.4	21.5	22.5	14.8	15.9	15.5	16.6	17.5
4H	21.4	22.4	22.1	23.2	24.1	15.3	16.4	16.1	17.1	18.1
6H	23.3	24.3	24.1	25.0	26.0	15.7	16.6	16.4	17.4	18.4
8H	24.4	25.3	25.2	26.1	27.1	15.7	16.7	16.5	17.5	18.4
12H	25.7	26.6	26.4	27.4	28.3	15.7	16.6	16.5	17.4	18.4
4H 2H	17.2	18.2	17.9	19.0	19.9	14.9	15.9	15.6	16.7	17.6
3H	20.4	21.3	21.2	22.1	23.1	16.6	17.5	17.3	18.3	19.2
4H	22.3	23.1	23.1	23.9	24.9	17.3	18.1	18.1	18.9	19.9
6H	24.4	25.2	25.3	26.0	27.0	17.8	18.5	18.6	19.4	20.4
8H	25.7	26.3	26.5	27.2	28.2	18.0	18.6	18.8	19.5	20.5
12H	27.1	27.7	27.9	28.6	29.6	18.1	18.7	18.9	19.5	20.6
8H 4H	22.6	23.2	23.4	24.1	25.1	18.7	19.4	19.6	20.3	21.3
6H	25.0	25.6	25.9	26.5	27.6	19.7	20.3	20.6	21.2	22.2
8H	26.5	27.0	27.3	27.9	29.0	20.1	20.6	21.0	21.5	22.6
12H	28.2	28.6	29.1	29.5	30.7	20.4	20.9	21.3	21.8	22.9
12H 4H	22.5	23.2	23.4	24.0	25.1	19.3	19.9	20.1	20.8	21.8
6H	25.1	25.6	26.0	26.5	27.6	20.6	21.1	21.4	22.0	23.1
8H	26.7	27.1	27.6	28.0	29.2	21.2	21.7	22.1	22.6	23.7
Variations with the observer position at spacings(CIE Pub.117):										
S = 1.0H	+ 0.1 / - 0.1					+ 0.1 / - 0.1				
1.5H	+ 0.2 / - 0.3					+ 0.2 / - 0.2				
2.0H	+ 0.3 / - 0.4					+ 0.3 / - 0.4				

CIE Pub.117, 1459 lm Total Lamp Luminous Flux Corrected (8log(F/F0) = 1.3)
 Area: 0.07248 m2

C Range: 0 - 360DEG
 C Interval: 22.5DEG
 Test Speed: HIGH
 Temperature:25.1DEG
 Operators:Wilson
 Test Date:2022-12-09

γ Range: 0 - 180DEG
 γ Interval: 0.5DEG
 Test System:EVERFINE GO-R5000_V2 SYSTEM V2.00.444
 Humidity:60.5%
 Test Distance:2.617m [K=1.0000]
 Remarks: File No.: WT-F-504-3206-01-A

Checker: Near Gao

Assessor: Akin Xu

UTILIZATION FACTORS TABLE

Test:U:120.18V I:0.2381A P:28.380W PF:0.9918 Freq:60.00Hz Lamp Flux:1458.9x1 lm		
NAME:	TYPE:	WEIGHT:
SPEC.:	DIM.:	SERIAL No.:
MFR.:	SUR.:	Shielding Angle:

REFLECTANCE										
Ceiling	0.8	0.8	0.8	0.7	0.7	0.7	0.5	0.5	0.5	0
Walls	0.7	0.5	0.3	0.7	0.5	0.3	0.7	0.5	0.3	0
Working plane	0.2	0.2	0.2	0.2	0.2	0.2	0.2	0.2	0.2	0
ROOM INDEX	UTILIZATION FACTORS(PERCENT) k(RI) x RCR = 5									
k = 0.60	42	30	22	41	29	22	38	28	21	14
0.80	51	38	29	49	37	29	45	34	27	19
1.00	59	45	36	56	43	35	51	43	34	24
1.25	65	52	43	62	50	42	56	46	39	28
1.50	71	58	49	67	55	47	60	51	44	31
2.00	78	66	57	74	63	55	66	58	51	36
2.50	83	72	63	78	68	61	70	62	56	39
3.00	87	77	69	82	73	66	73	66	60	42
4.00	92	83	76	86	79	72	77	71	65	46
5.00	95	87	81	89	83	77	79	74	69	49
ROOM INDEX	UF(total)									Direct
According to DIN EN 13032-2 2004			Suspended				SHRNOM = 1.25			

C Range: 0 - 360DEG
 C Interval: 22.5DEG
 Test Speed: HIGH
 Temperature:25.1DEG
 Operators:Wilson
 Test Date:2022-12-09

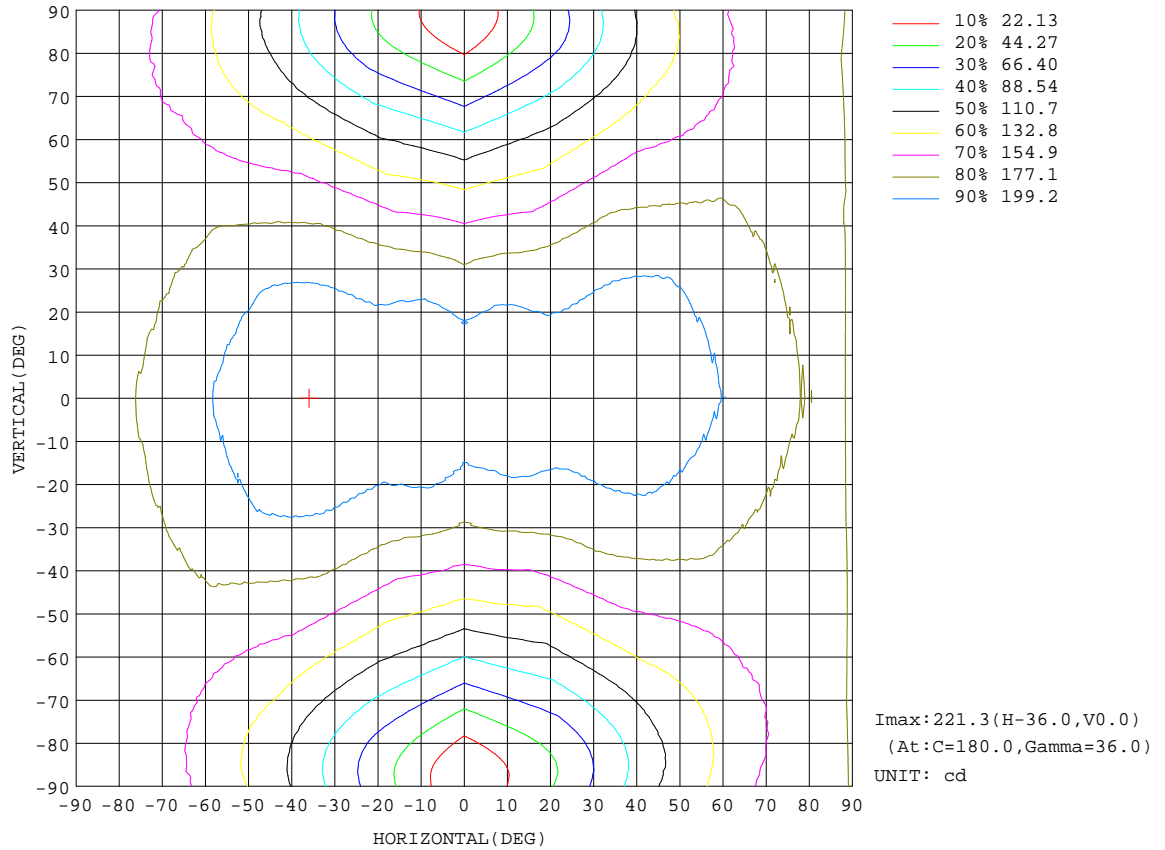
γ Range: 0 - 180DEG
 γ Interval: 0.5DEG
 Test System:EVERFINE GO-R5000_V2 SYSTEM V2.00.444
 Humidity:60.5%
 Test Distance:2.617m [K=1.0000]
 Remarks: File No.: WT-F-504-3206-01-A

Checker: Near Gao

Assessor: Akin Xu

ISOCANDELA DIAGRAM

Test:U:120.18V I:0.2381A P:28.380W PF:0.9918 Freq:60.00Hz Lamp Flux:1458.9x1 lm		
NAME:	TYPE:	WEIGHT:
SPEC.:	DIM.:	SERIAL No.:
MFR.:	SUR.:	Shielding Angle:



C Range: 0 - 360DEG
 C Interval: 22.5DEG
 Test Speed: HIGH
 Temperature: 25.1DEG
 Operators: Wilson
 Test Date: 2022-12-09

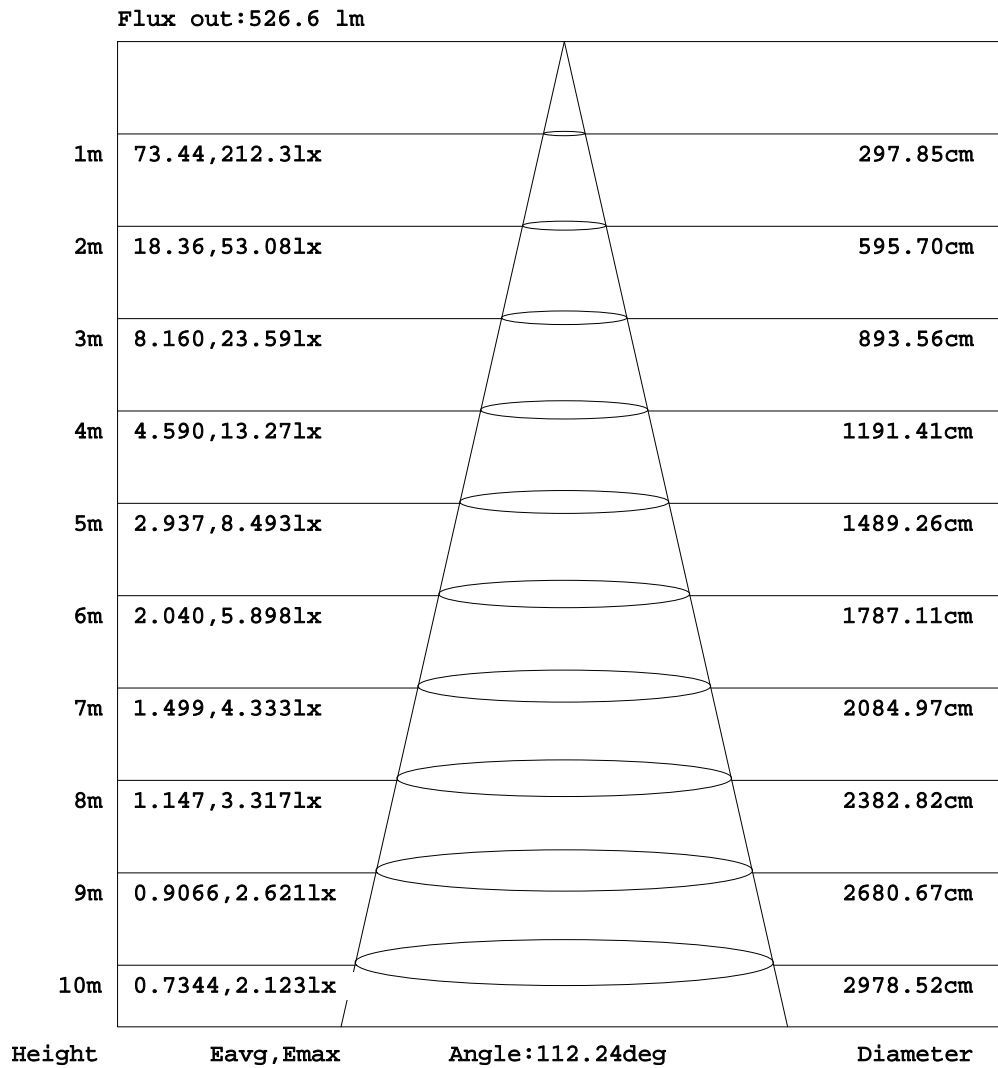
γ Range: 0 - 180DEG
 γ Interval: 0.5DEG
 Test System: EVERFINE GO-R5000_V2 SYSTEM V2.00.444
 Humidity: 60.5%
 Test Distance: 2.617m [K=1.0000]
 Remarks: File No.: WT-F-504-3206-01-A

Checker: Near Gao

Assessor: Akin Xu

AAI Figure

Test:U:120.18V I:0.2381A P:28.380W PF:0.9918 Freq:60.00Hz Lamp Flux:1458.9x1 lm		
NAME:	TYPE:	WEIGHT:
SPEC.:	DIM.:	SERIAL No.:
MFR.:	SUR.:	Shielding Angle:



Note:The Curves indicate the illuminated area and the average illumination when the luminaire is at different distance.

C Range: 0 - 360DEG
C Interval: 22.5DEG
Test Speed: HIGH
Temperature:25.1DEG
Operators:Wilson
Test Date:2022-12-09

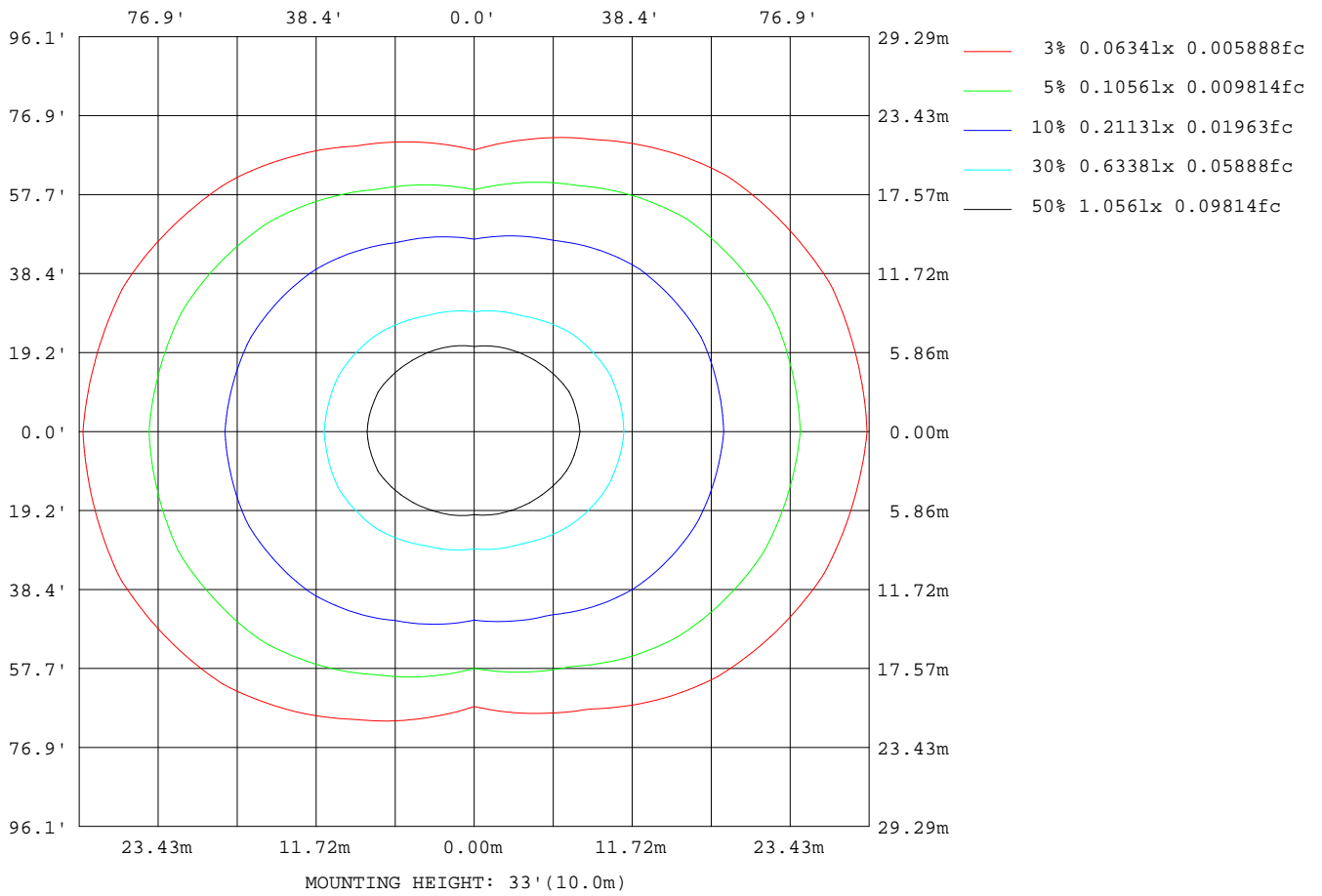
γ Range: 0 - 180DEG
γ Interval: 0.5DEG
Test System:EVERFINE GO-R5000_V2 SYSTEM V2.00.444
Humidity:60.5%
Test Distance:2.617m [K=1.0000]
Remarks: File No.: WT-F-504-3206-01-A

Checker: Near Gao

Assessor: Akin Xu

ISOLUX DIAGRAM

Test:U:120.18V I:0.2381A P:28.380W PF:0.9918 Freq:60.00Hz Lamp Flux:1458.9x1 lm		
NAME:	TYPE:	WEIGHT:
SPEC.:	DIM.:	SERIAL No.:
MFR.:	SUR.:	Shielding Angle:



C Range: 0 - 360DEG
 C Interval: 22.5DEG
 Test Speed: HIGH
 Temperature:25.1DEG
 Operators:Wilson
 Test Date:2022-12-09

γ Range: 0 - 180DEG
 γ Interval: 0.5DEG
 Test System:EVERFINE GO-R5000_V2 SYSTEM V2.00.444
 Humidity:60.5%
 Test Distance:2.617m [K=1.0000]
 Remarks: File No.: WT-F-504-3206-01-A

Checker: Near Gao

Assessor: Akin Xu

LED Avg.L Report

Test:U:120.18V I:0.2381A P:28.380W PF:0.9918 Freq:60.00Hz Lamp Flux:1458.9x1 lm		
NAME:	TYPE:	WEIGHT:
SPEC.:	DIM.:	SERIAL No.:
MFR.:	SUR.:	Shielding Angle:

AvgL	cd/m2
L_0~180(65)av	6263
L_0~180(75)av	9566
L_0~180(85)av	27318
L_90~270(65)av	2387
L_90~270(75)av	1920
L_90~270(85)av	898
L_45(65)av	4846
L_45(75)av	6813
L_45(85)av	18219

Standard: GB/T 29293-2012

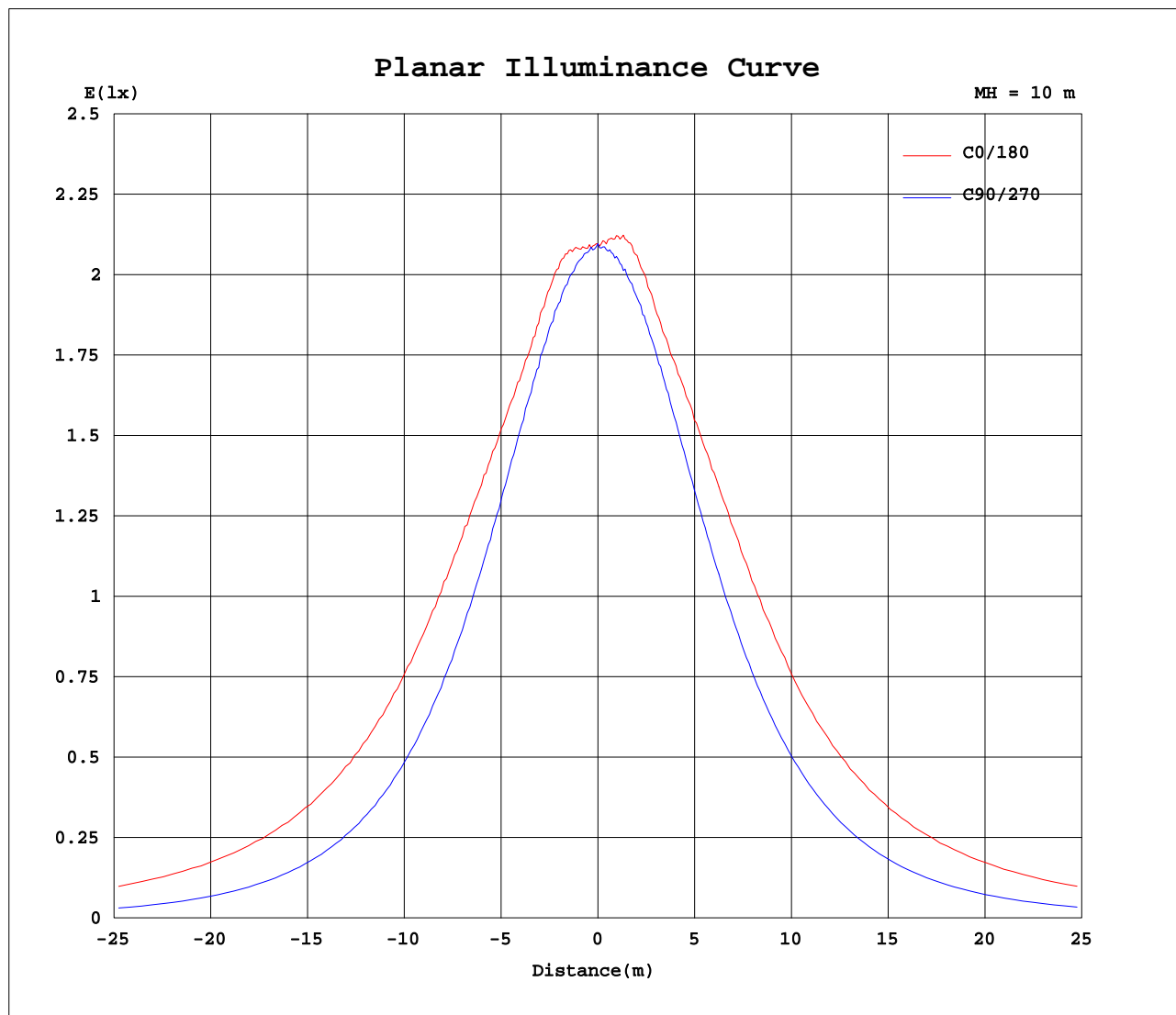
C Range: 0 - 360DEG
 C Interval: 22.5DEG
 Test Speed: HIGH
 Temperature:25.1DEG
 Operators:Wilson
 Test Date:2022-12-09

γ Range: 0 - 180DEG
 γ Interval: 0.5DEG
 Test System:EVERFINE GO-R5000_V2 SYSTEM V2.00.444
 Humidity:60.5%
 Test Distance:2.617m [K=1.0000]
 Remarks: File No.: WT-F-504-3206-01-A

Checker: Near Gao

Assessor: Akin Xu

Planar Illuminance Curve



C Range: 0 - 360DEG
 C Interval: 22.5DEG
 Test Speed: HIGH
 Temperature: 25.1DEG
 Operators: Wilson
 Test Date: 2022-12-09

γ Range: 0 - 180DEG
 γ Interval: 0.5DEG
 Test System: EVERFINE GO-R5000_V2 SYSTEM V2.00.444
 Humidity: 60.5%
 Test Distance: 2.617m [K=1.0000]
 Remarks: File No.: WT-F-504-3206-01-A

Checker: Near Gao

Assessor: Akin Xu

LUMINOUS DISTRIBUTION INTENSITY DATA

Test:U:120.18V I:0.2381A P:28.380W PF:0.9918 Freq:60.00Hz Lamp Flux:1458.9x1 lm		
NAME:	TYPE:	WEIGHT:
SPEC.:	DIM.:	SERIAL No.:
MFR.:	SUR.:	Shielding Angle:

Table--1

UNIT: cd

C(DEG)\ γ (DEG)	0	22.5	45	67.5	90	112.5	135	157.5	180	202.5	225	247.5	270	292.5	315	337.5			
0	210	210	210	210	210	210	210	210	210	210	210	210	210	210	210	210			
5	210	208	209	207	207	208	210	214	214	212	212	209	208	208	208	211			
10	215	212	210	204	205	208	213	217	219	218	215	209	206	207	211	214			
15	214	211	210	202	199	206	212	216	216	216	214	207	201	206	211	213			
20	210	207	205	197	193	203	207	211	215	213	210	204	197	202	208	209			
25	211	204	198	191	184	195	201	212	216	212	204	199	188	197	201	208			
30	213	205	191	183	175	186	197	213	219	213	198	190	180	189	196	208			
35	216	205	187	172	163	175	194	214	220	213	195	180	168	179	193	211			
40	215	205	182	160	151	164	190	211	220	212	190	168	156	167	190	210			
45	214	201	177	147	137	153	185	208	215	207	185	156	142	156	187	208			
50	209	196	170	134	122	142	179	202	210	201	177	143	128	145	181	203			
55	205	189	161	121	105	130	170	197	204	194	168	131	112	134	174	198			
60	198	182	151	108	88.4	119	162	189	198	186	158	117	94.6	122	165	191			
65	192	174	140	94.2	69.9	105	151	182	191	177	147	103	76.3	110	156	184			
70	185	167	129	80.2	51.7	92.1	142	175	185	170	135	88.1	57.8	96.3	146	177			
75	181	159	119	65.8	33.4	78.5	132	168	178	161	124	73.3	38.7	83.0	136	171			
80	175	154	111	53.4	16.8	67.1	126	163	174	155	114	58.9	21.1	70.4	128	165			
85	175	151	107	46.2	4.29	60.7	121	160	170	151	108	49.0	7.06	62.2	125	163			
90	178	155	110	48.4	1.52	62.2	124	162	173	152	107	46.5	1.23	62.1	127	166			
95	185	161	115	52.5	2.49	65.6	126	167	178	156	111	50.7	1.66	67.0	132	172			
100	187	164	119	55.1	3.85	68.5	129	168	181	159	114	51.9	2.82	70.7	135	175			
105	189	166	121	49.1	5.74	62.2	131	169	180	158	114	45.3	4.55	67.5	137	177			
110	188	166	117	41.6	7.77	54.1	125	167	179	157	107	38.1	6.33	59.3	136	176			
115	185	160	105	33.4	9.74	44.7	112	158	170	146	96.1	30.4	8.24	49.7	124	172			
120	169	144	90.8	30.9	11.6	38.8	97.6	141	155	132	82.9	28.2	9.80	40.4	108	155			
125	150	125	75.9	28.5	13.1	37.1	81.7	122	135	114	68.8	27.5	11.2	37.3	91.9	136			
130	127	106	61.4	29.3	14.6	35.4	66.1	103	115	95.1	54.4	26.7	12.5	32.5	74.1	114			
135	104	85.7	48.5	28.5	16.5	33.6	52.7	82.3	93.2	75.6	45.1	26.2	14.2	33.8	58.3	93.0			
140	81.3	66.4	45.2	28.0	19.5	32.3	48.7	64.0	72.5	58.4	42.0	25.6	16.9	32.4	50.5	72.1			
145	60.9	53.6	41.9	27.3	21.9	30.6	44.6	54.3	56.5	50.3	39.2	24.9	18.6	30.8	46.3	56.6			
150	53.4	48.7	38.5	26.9	23.5	28.1	40.7	48.6	50.5	45.5	36.0	24.7	20.8	29.4	41.9	50.7			
155	46.8	43.2	35.0	26.8	24.8	28.5	36.7	43.2	44.7	40.6	32.8	25.1	23.2	28.4	37.5	44.7			
160	40.2	37.7	31.7	25.7	24.7	28.0	32.7	37.4	38.6	35.5	29.5	25.4	24.2	27.8	33.0	38.8			
165	34.0	32.4	28.8	21.1	19.6	25.3	28.0	31.9	32.8	30.7	27.9	24.7	18.8	25.6	30.2	33.0			
170	29.8	28.8	18.1	15.3	16.6	17.8	23.6	28.5	29.0	28.2	26.0	14.1	14.8	21.3	28.3	29.6			
175	26.9	16.2	16.5	18.5	17.7	17.5	17.2	17.8	26.2	25.0	17.0	14.3	15.9	15.9	22.6	26.8			
180	9.94	9.94	9.94	9.94	9.94	9.94	9.94	9.94	9.94	9.94	9.94	9.94	9.94	9.94	9.94	9.94			

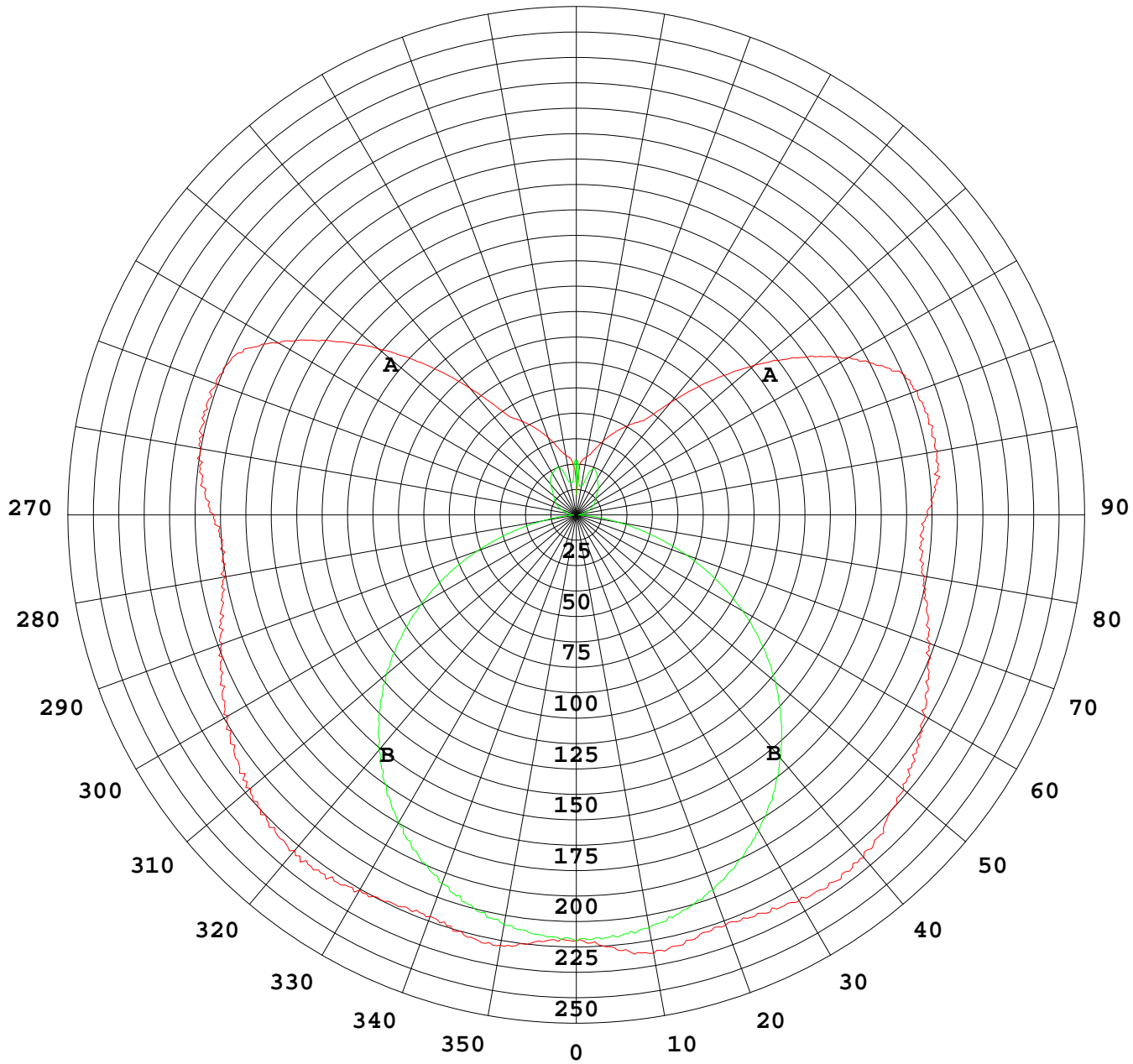
C Range: 0 - 360DEG
 C Interval: 22.5DEG
 Test Speed: HIGH
 Temperature:25.1DEG
 Operators:Wilson
 Test Date:2022-12-09

γ Range: 0 - 180DEG
 γ Interval: 0.5DEG
 Test System:EVERFINE GO-R5000_V2 SYSTEM V2.00.444
 Humidity:60.5%
 Test Distance:2.617m [K=1.0000]
 Remarks: File No.: WT-F-504-3206-01-A

Checker: Near Gao

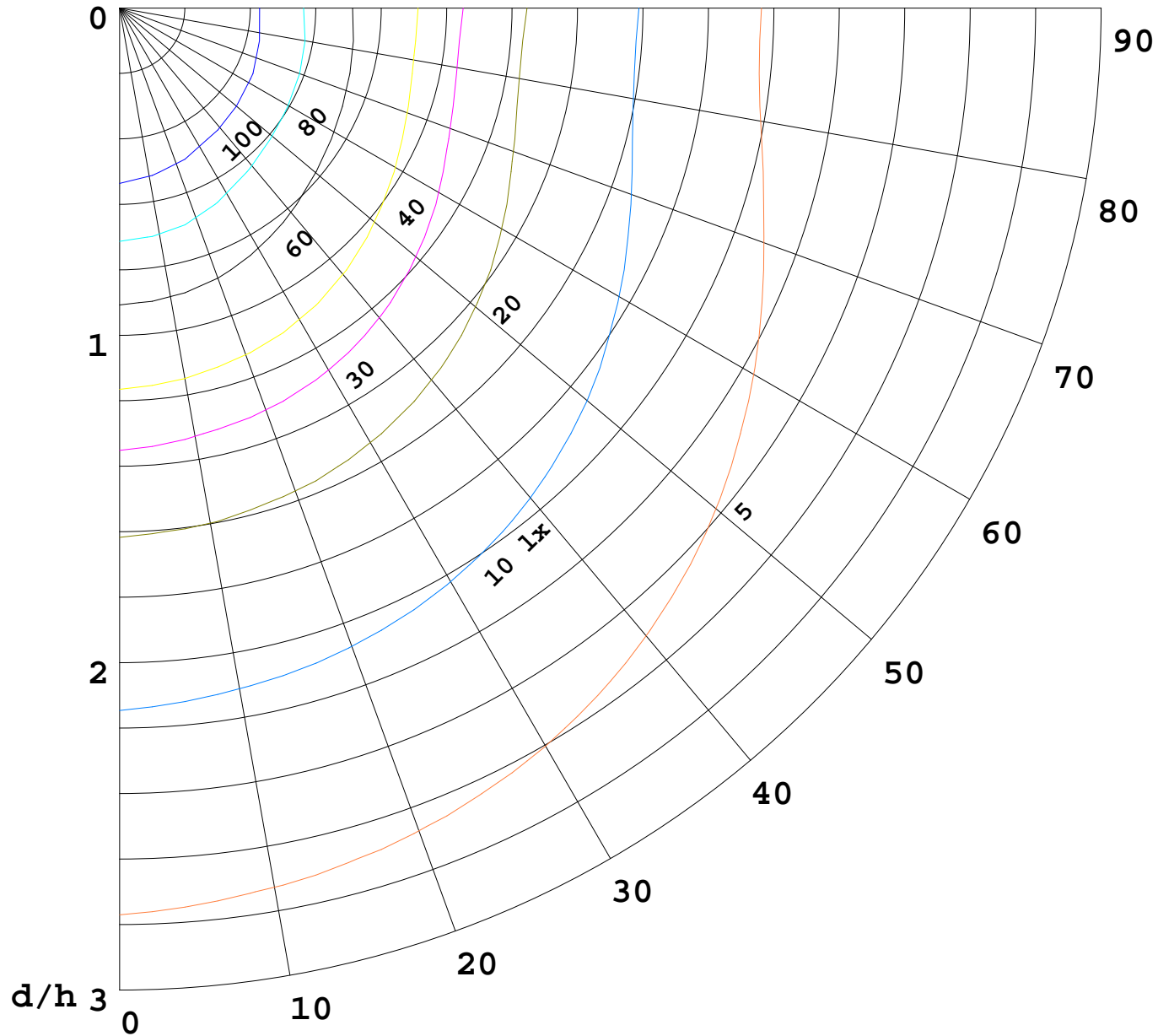
Assessor: Akin Xu

I(cd)



1000 lm

$K = 1$



F = 1000 lm
K = 0.7
Hcc = 0.8 m
Hfc = 0.0 m
Eave = 100 lx

	Pcc	Pw	Pfc
—————	70	50	30
—————	50	30	20

